

Hougen Ltd  
Bespoke Mobility Solutions



# HJC2500

## 2500 KG Jacking Castor

# Hougen Ltd

## Bespoke Mobility Solutions



### HJC2500 Jacking Castor

- Machined steel body
- 2500 Kg dynamic load capacity
- 5000 Kg static load (certified)
- Top wind screw jack
- 150mm lift
- Vulkollan Polyurethane tread wheel
- Taper roller bore with double lip seals
- Orange paint finish
- 4 position directional lock option available upon request



Other wheel options available on request include:

- Steel & Stainless Steel - Flat or flanged suitable for low speed rail use
- Cast Nylon - Flat or flanged can be used with stainless steel version of HJU2500
- Rubber - ideal for rough terrain, rubber will reduce the dynamic load capacity of the jacking castor
- Twin wheel castor options with various wheel types for larger footprint and stability benefits

The HJC2500 can also be manufactured fully in stainless steel for  
Pharmaceutical, Food, Oil & Gas, Aerospace & Defence industries  
Ideal for clean room and non sparking environments including ATEX

# HJC2500 - 2500 Kg Jacking Castor

## Index

Page 2

Dimensions

Page 3

Directional lock detail

Page 4

Load information

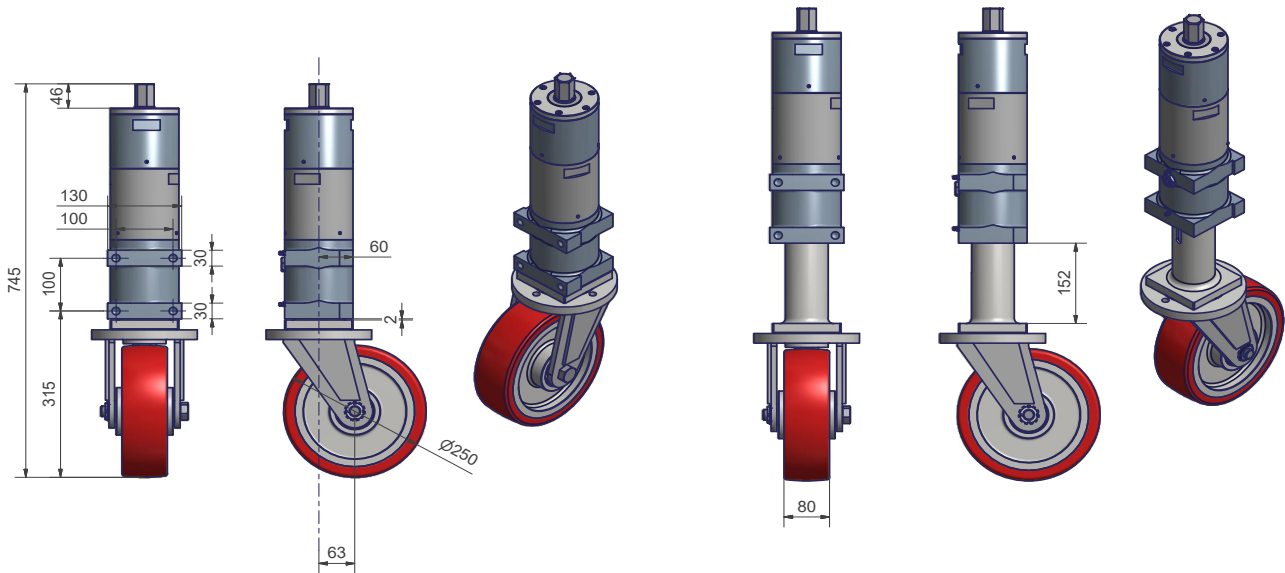
Page 5

Operating Instructions



# HJC2500 - 2500 Kg Jacking Castor

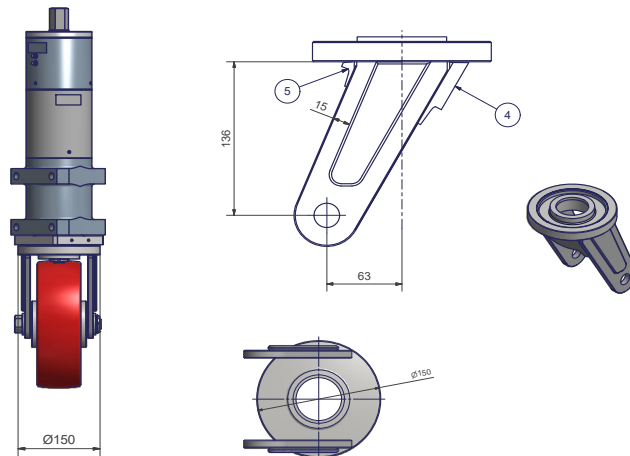
## Dimensional information



### Key dimensions

Overall height closed	745mm
Overall height extended	897mm
Wheel diameter	250mm
Wheel tread width	80mm
Swivel radius	197mm
Offset	63mm
Fixing plate centres	100x100mm
Fixing bolt	M16
Jacking lift	150mm
Hexagon drive A/F	30mm

### Castor plate arrangement



# HJC2500 - 2500 Kg Jacking Castor

## Directional lock detail

Side mounted for protection and damage prevention

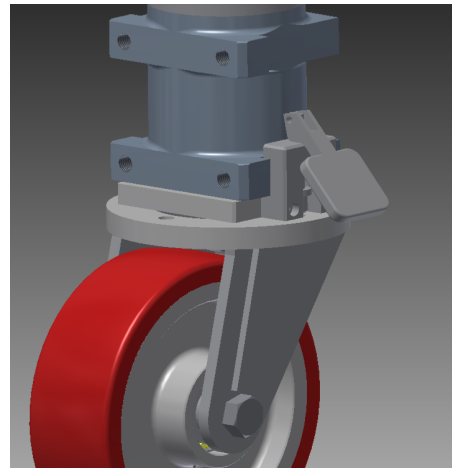
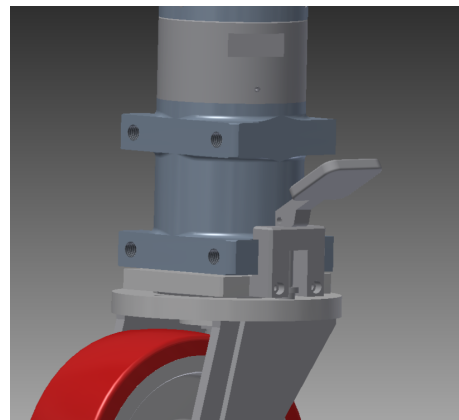
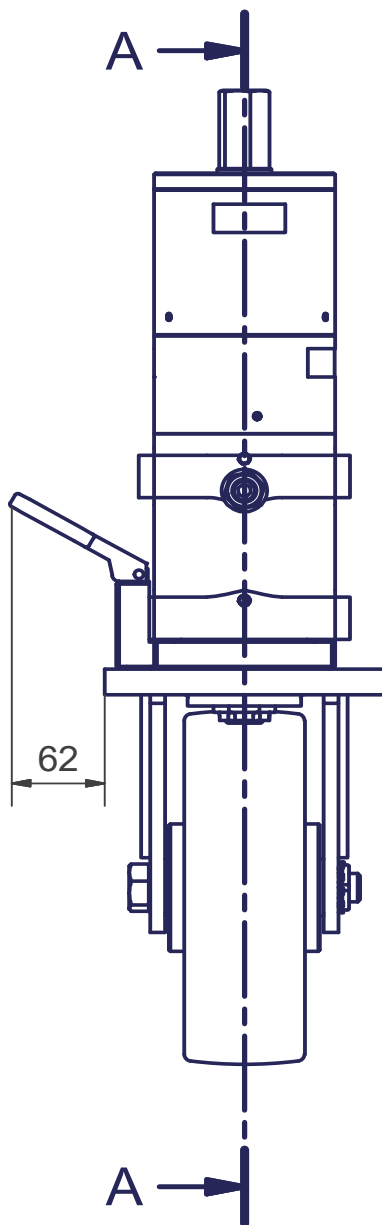
Handed to suit each application

Operating lever can be mounted on either side

Foot operated

Positive lock

4 position



# HJC2500 - 2500 Kg Jacking Castor

## Load information

Dynamic load  
2500 Kg

Static load  
5000 Kg

### Report Of Thorough Examination

This report meets the requirements of schedule 1 of regulation 10 of LOLER 1998



**CONCORD**  
LIFTING EQUIPMENT LTD.  
SAFE AND SECURE LIFTING SOLUTIONS



Concord Lifting Equipment Ltd, 10 Foundry Way, Little End Road Eaton Socon St Neots, Cambs PE19 8TR Tel: 01480-217605

Report No: 134488

Customer No: PO-16082022-01

Date of Report: 9-9-2022

Colour code (if required):

Name & Address of the employer for whom the examination was made: HOUGEN LTD 85 OLNEY ROAD, LAVENDON BUCKS MK45 4ER				Address of the premises at which the examination was made: BT1 - BIRMINGHAM B6 7DB				Status: ND - No Defect SDR - See Defect Report NF - Not Found	
Identification Number	Description	WLL or SWL	Date of Last Thorough Examination	Date of this Thorough Examination	Latest date of the next thorough examination	Reason for Examination (See Below)	Details of any test VE visual exam FT function test LLT light load test	Status (See above)	Safe to Use
HJC5000	1 OFF SPECIAL APPLICATION JACKING CASTOR C/W Steel Wheel	7500KG		7-9-2022	6-9-2023	E	TESTED TO 10,000KG	ND	YES
HJC2500	1 OFF SPECIAL APPLICATION JACKING CASTOR C/W Polyurethane tread steel centre wheel	7500KG		7-9-2022	6-9-2023	E	TESTED TO 10,000KGS	ND	YES
<b>Reason for Examination</b>	Installation: <b>A</b>	6 Monthly: <b>B</b>	12 Monthly: <b>C</b>	Written Scheme: <b>D</b>			Exceptional Circumstance: <b>E</b>		
Name & qualifications of the person making this report: D TRANTER				Name of the person authenticating this report: Signature: Michele Meeds					
<b>THIS CERTIFICATE CONFORMS AS PART OF YOUR OWN TECHNICAL FILE</b>				Signature: <i>MMeeds</i>					

All transactions are subject to our standard terms and conditions of hire and sale, which can be viewed at [www.concordlifting.co.uk/terms](http://www.concordlifting.co.uk/terms), copies of which are available at any of our branches, or upon request. Concord Lifting Equipment Ltd Registered in England & Wales, company No: 3313414 VAT Registration No: 690 9438 94. Registered office: Unit 56, Wimbledon Stadium Business Park, Riverside Road, London, SW17 0BE.  
Information used on this report of Thorough Examination has been taken from original certificates of origin, copies of which is available upon request.

## Running surface considerations

Running surfaces have to be smooth, flat, free of obstacles greater than 5mm in height, free of thresholds, ramps & chemicals that may degrade the polyurethane tread.

## Temperature range

From -30 to +45 Degrees Centigrade

Load capacity and performance will be impaired at the higher and lower values stated  
Please contact technical support for details

Hougen Jacking Castors are supplied fully greased

Grease nipples are fitted on the wheel and jacking unit for maintenance

# HJC2500 - 2500 Kg Jacking Castor

## Operating Instructions

Inspect the jacking castor before use  
Ensure the jacking surface is stable level and capable of taking the load  
Only raise or lower the jack when in a static position

### Raising & lowering the jacking castors on trolleys

When raising multiple jacking castors, care must be taken to ensure load stability is maintained  
Raise each jack a small amount as the load is transferred across the jacking castors operating in unison  
Extra care must be taken when lowering the jacking castors as the load transfer can be more pronounced  
Lower each jack a small amount as the load is transferred across the jacking castors operating in unison

### Moving the jacking castors

Always inspect the wheels and ensure swivel head is functioning correctly before use  
Ensure the running surface is free from debris, thresholds, ramps and chemicals that may attack the polyurethane tread  
Ensure the load to be moved is evenly mounted and the load is evenly distributed over the castors

### Based on a 4 jacking castor arrangement only

#### Dynamic load limitations for safe operation

If the surface is uneven then the total load should not exceed the dynamic load capacity with a safety factor of 1 castor  
Jacking Castors rated at 2500 Kg dynamic have a maximum dynamic load of 7500 Kg  
Load should be evenly spread all 4 jacking castors should be in contact with the running surface

### Rolling resistance information

Starting resistance approx 4 - 6% of the total load  
Rolling resistance approx 2% of the total load